

A close-up photograph of a lemon slice floating in water. The water surface is visible as a horizontal line across the middle of the frame. Numerous small, clear bubbles are clinging to the surface of the lemon slice and floating in the water around it. The background is a plain, light color.

3M Science.
Applied to Life.™

Let's be clear:

**One of our
cartridges beats
four of theirs*.**

3M™ High Flow Series of products

Chances are your foodservice establishment has many water filtration needs based on the multiple applications (i.e. ice, coffee, cold beverage) being used. With 3M's High Flow Series of products, you can address your filtration needs effectively and efficiently, with less cartridges*.

* One of 3M's HF90 cartridges has six times the membrane/media surface area, four times the sediment holding capacity, and greater chlorine taste and odor reduction than four of the leading competitor's water filters

The 3M™ High Flow Series of products provides...

Economy	Single-cartridge flow rates and capacities previously available only with three- or four-cartridge systems*.
	Up to 12 month cartridge life for cartridges with <u>I</u> ntegrated <u>M</u> embrane <u>P</u> re- <u>A</u> ctivated <u>C</u> arbon <u>T</u> echnology (“I.M.P.A.C.T.”) media.*
	Practically eliminates need for a separate pre-filter.
Ease	Fast and easy cartridge change-outs with Sanitary Quick Change (SQC) encapsulated cartridge design.
	No exposure to contaminated media.
	No requirement for pre-activation of the media.
Certification	Direct or easily-adaptable connections to existing plumbing lines with NPT horizontal inlet and outlet ports.
	NSF Standard 42 compliant materials
	Certification to NSF Standard 53 for cyst reduction and reduction of 99.99 percent of water-borne bacteria** when using 3M™ High Flow Series nylon-membrane cartridge filters*.
Performance	Recipe Quality Water™ for all commercial foodservice applications, including cold beverages, ice and all brewed beverages.
	Combined sediment, cyst, water-borne bacteria** and scale reduction with chlorine taste and odor reduction in a single cartridge from our innovative <u>I</u> ntegrated <u>M</u> embrane <u>P</u> re- <u>A</u> ctivated <u>C</u> arbon <u>T</u> echnology (“I.M.P.A.C.T.”) media.
	Reduction of sediment and abrasive hard particles helps to extend the life of pumps, valves, o-rings, and seals.
	Compact manifold systems to simultaneously service multiple applications.

Whether your foodservice application is cold beverages, ice machines, coffee, tea, espresso, or any combination, a 3M™ High Flow Series system is the one you should count on for cyst and bacteria** reduction, sediment holding, chlorine taste and odor reduction, and scale inhibition. No activation steps are required, and, for most water, no pre-filter is needed.

* Filters featuring the Integrated Membrane Pre-Activated Carbon Technology (“I.M.P.A.C.T.”) media can clearly be identified by the (“I.M.P.A.C.T.”) icon on the product label.

** As tested with E. Coli ATCC (11229). Tested and verified by manufacturer’s laboratory.



Table of Contents

3M™ High Flow Series of products in the foodservice arena	4-5
Multiple-Equipment Combination Applications	8-9
Cold Beverage Applications.....	10-11
Ice Applications.....	12-13
Hot Beverage Applications.....	14-15
Scale Reduction Applications	15
About 3M Purification.....	16

3M™ High Flow Series of products in the foodservice arena

Effective water filtration can help lower your capital and operating costs for your foodservice operation. No matter your application whether is cold, hot and specialty beverages, ice, or any combination, the 3M High Flow Series of products provides a solution for you including cyst and bacteria* reduction filters especially constructed for high turbidity waters. 3M can help you lower capital and operating costs for your foodservice operation.

3M™ High Flow Series of commercial foodservice products offers simple, effective and easy-to-install solutions that meet the volume, water clarity and maintenance expectations of restaurant owners, chain, fast food and convenience store operators, supermarkets, cafeterias, and institutions.

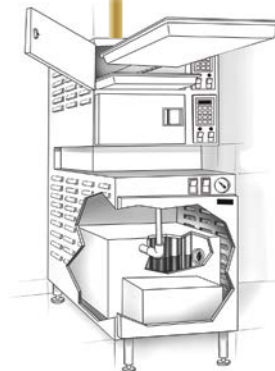


Water Source

For central systems serving multiple applications, go to pages 8 and 9

For systems dedicated to the improved taste, appearance, and consistency of cold beverages, go to pages 10 and 11.

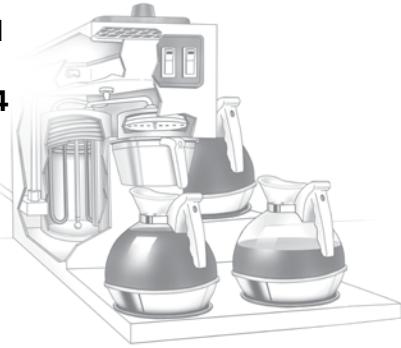
For scale reduction applications, go to page 15.



Steamer

* As tested with E. Coli ATCC (11229). Tested and verified by manufacturer's laboratory. Filters featuring the Integrated Membrane Pre-Activated Carbon Technology ("I.M.P.A.C.T.") media can clearly be identified by the ("I.M.P.A.C.T.") icon on the product label.

For systems dedicated to great tasting coffee and tea, go to pages 14 and 15.



Coffee Brewer

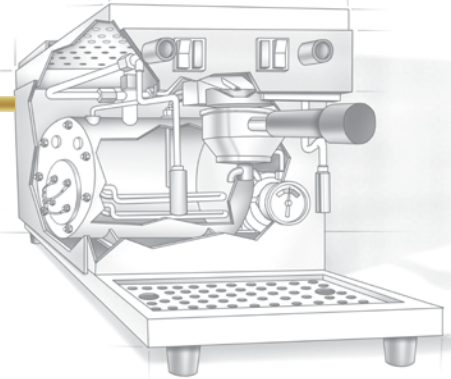
Scale Inhibited Water

For systems dedicated to cleaner, consistent, great-tasting ice, go to pages 12 and 13.

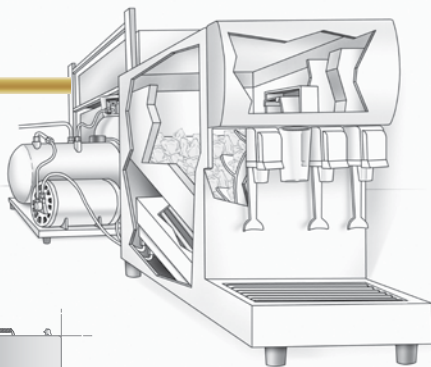


Ice Machine

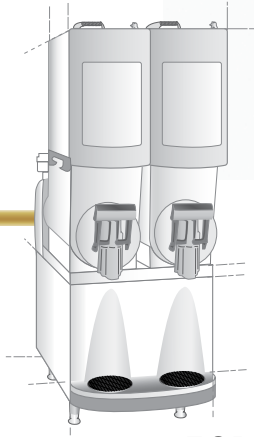
For systems dedicated to great tasting espresso and iced tea, go to pages 14 and 15.



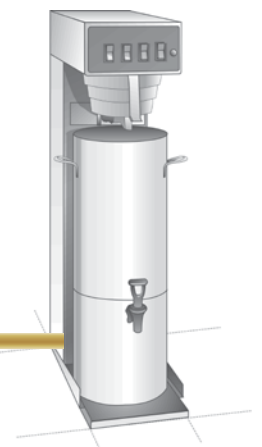
Espresso Maker



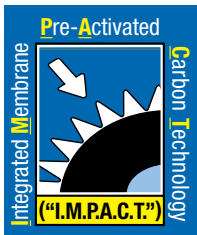
Post Mix



FCB Machine



Iced Tea Machine



The 3M™ High Flow Series of products includes the option of replacement filters featuring **Integrated Membrane Pre-Activated Carbon Technology** (“I.M.P.A.C.T.”) for excellent cartridge life and economy. A single filter can accomplish what was previously the job of four of the leading competitor's water filters.*

The **Integrated Membrane Pre-Activated Carbon Technology** (“I.M.P.A.C.T.”) media package combines a pharmaceutical-grade microporous membrane and a pre-activated carbon block in a single cartridge to dramatically reduce pressure drop and practically eliminate the need for pre-filtration. The integrated membrane provides excellent sediment holding capabilities while reducing *Cryptosporidium* and *Giardia* cysts¹ and over 99.99 percent of water-borne bacteria.² Pre-activation of the carbon media is not required.*

Reduce scale formation, cysts, bacteria², sediment, and chlorine taste and odor with convenience and consistent performance. Stop wasting time and money on messy sump systems. By creating a single cartridge system, using the HF90 replacement filter, that delivers over 864,000 8-oz cups of coffee, 432,000 16-oz soft drinks (in a 22-oz cup), or 216,000 pounds of ice (25 gallons at 100 lbs of ice) at a flow of up to 5 gallons per minute (gpm), 3M Water Filtration Products deliver Recipe Quality Water™ while reducing filtration costs.

Surface Area

3M High Flow Series Model HF90 filter has nearly 6 times the surface area compared to that of the leading competitor's filter for improved sediment filtration, reduced pressure drop and longer cartridge life.



3M High Flow HF90 Cartridge Bacteria* Membrane



Competitor

Cartridge Throughput

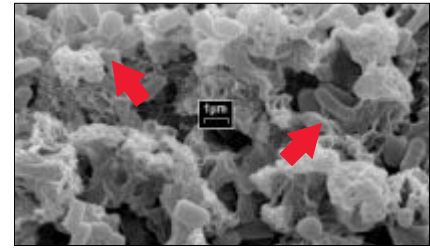
3M High Flow Series of cartridges with **Integrated Membrane Pre-Activated Carbon Technology** (“I.M.P.A.C.T.”) show higher throughputs and longer lifetimes. In side-to-side tests conducted with a surrogate plugging agent to a 25% loss in flow rate, a single HF90 cartridge averaged over 4.5 times the sediment holding capacity of the leading competitor's filter.

* Filters featuring the Integrated Membrane Pre-Activated Carbon Technology (“I.M.P.A.C.T.”) media can clearly be identified by the (“I.M.P.A.C.T.”) icon on the product label.

¹ NSF Standard 53

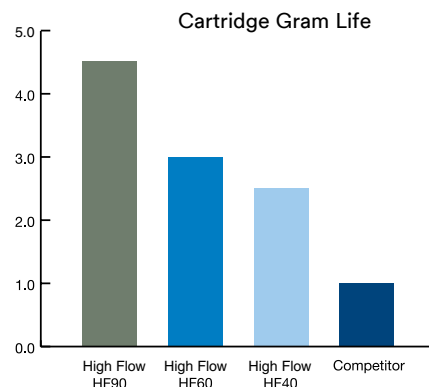
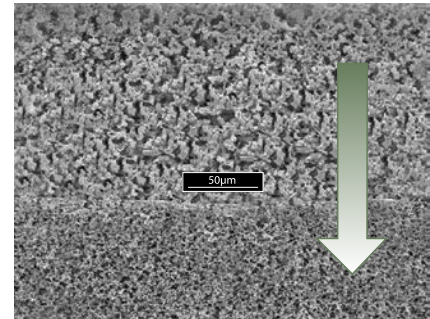
² As tested with E. Coli ATCC (11229). Tested and verified by manufacturer's laboratory.

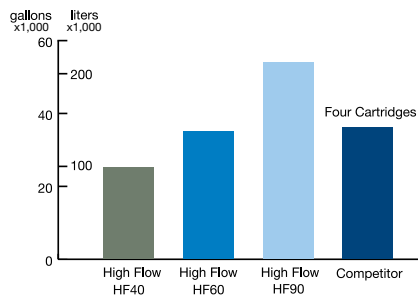
Over 99.99% of *E.coli* bacteria* are reduced by the nylon pharmaceutical-grade membrane.



Two-Zone Membrane

Large particles are captured in the top zone and smaller particles in the bottom zone of the graded density microporous nylon membrane, providing excellent cartridge sediment-holding capacity.





Chlorine Capacities

The high chlorine taste and odor capacities* for 3M High Flow cartridges with Integrated Membrane Pre-Activated Carbon Technology (“I.M.P.A.C.T.”) help assure that a single HF90 cartridge out-performs a four-cartridge system from the leading competitor's filter**.

* at an average of 96+% reduction

** 4 Competitor cartridges each with 9,000 Gal. (34,000 Lit.) chlorine capacity

Bacteria*	Percent Reduction Achieved
E. coli	> 99.9989
P.fluorescens	> 99.9999

Nylon-Membrane Bacterial* Reduction

Testing results for cartridge filters with 10 square feet (0.93 square meters) of pleated 3M™ High Flow Series nylon membrane challenged with 10 liters of water containing organisms at $>10^5$ cfu/ml.



Cutaway of 3M™ High Flow Series Cartridge with Integrated Membrane Pre-Activated Carbon Technology (“I.M.P.A.C.T.”) Media

- 1 Polypropylene housing.
- 2 Media with pleated membrane design helps provide cyst and bacteria¹ protection and excellent sediment holding capabilities with minimal pressure drop.
- 3 Carbon block technology has more than four times the chlorine taste and odor reduction capacity of the leading competitor's pre-coat filter. Bacteriostatic and bacteria inhibition agent included for improved hygiene.
- 4 Pleated membrane media in HF90 has six (6) times the surface area of the leading competitor's filter (see Surface Area diagram on page 6).
- 5 Cartridges feature a 5 micron pre-filter wrap.

¹ As tested with E. Coli ATCC (11229). Tested and verified by manufacturer's laboratory.

3M™ High Flow Systems for Multi-Equipment/Combinations

A central system is typically more economical and easier to install and service than dedicated systems.

For Recipe Quality Water™ to several pieces of equipment that require different water characteristics, use 3M™ High Flow Dual Port and Dual Flow Manifolds. Integrated Membrane Pre-Activated Carbon Technology (“I.M.P.A.C.T.”) systems offer cyst and bacteria* reduction.

Dual Port Systems

Two separate streams exit the High Flow system manifold providing reduced sediment and chlorine taste and odor.

One stream supplies cold-beverage dispensers.

Proportionately-dosed scale inhibition media is added to the second stream from a dedicated HF8-S cartridge to reduce the ability of calcium and magnesium to precipitate as hard scale on the evaporator plates of an ice machine and/or the heating coils of a coffee brewer.



DP290

Dual Flow Systems

Two separate streams exit the High Flow manifold.

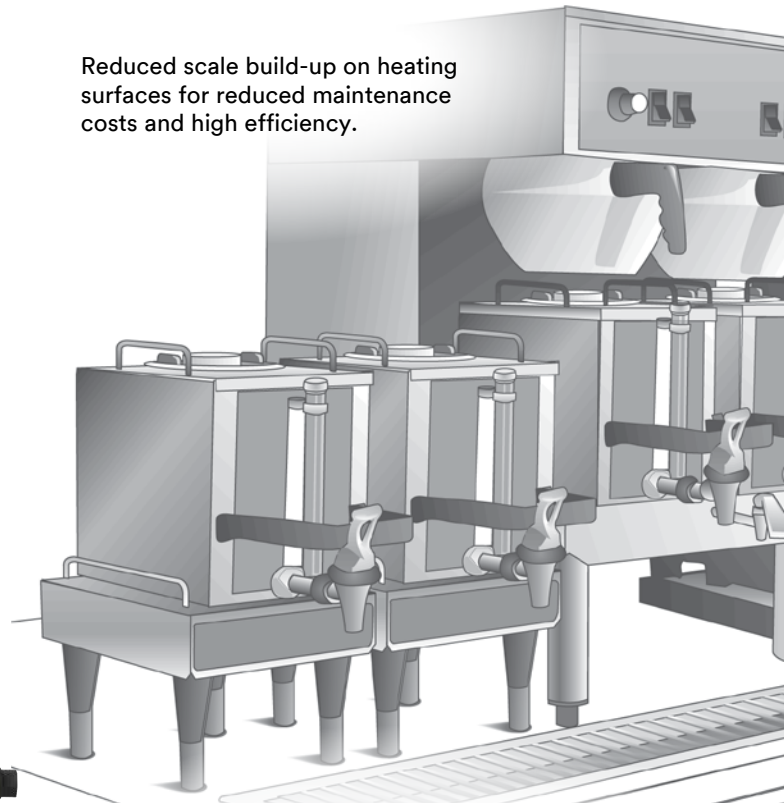
The first stream from Dual Flow system DF290-CL supplies cold beverage applications and is filtered for reduced sediment, chlorine taste and odor, chloramine and carries no scale-inhibition media.

The second stream carries scale inhibition media and is filtered to reduce sediment, while leaving the disinfectant (eg. chlorine) in the product water to help ice machines with biofilm control.

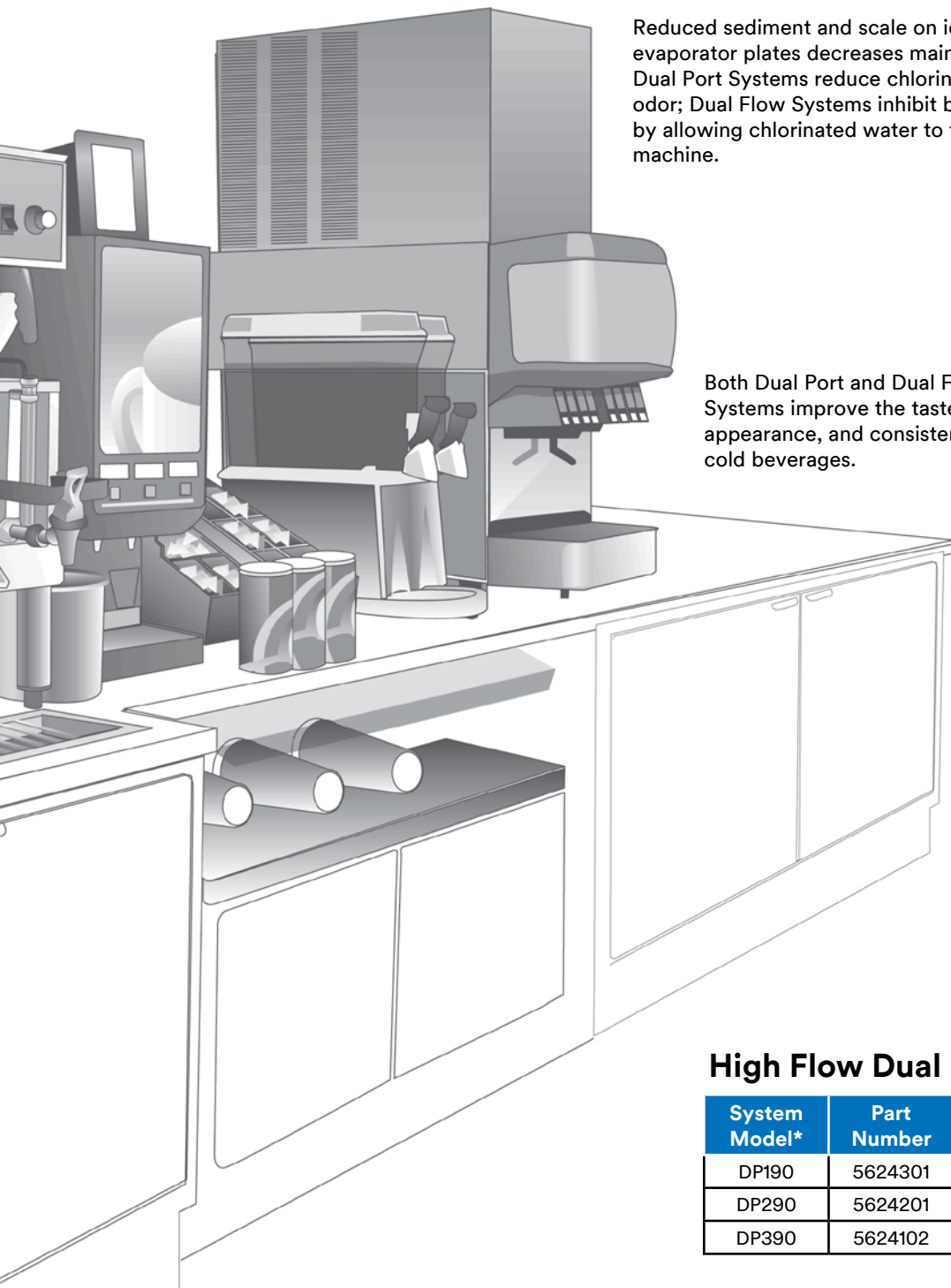


DF290-CL

Reduced scale build-up on heating surfaces for reduced maintenance costs and high efficiency.



Dual Port and Dual Flow Systems are engineered for high flow rates and high capacities to supply the benefits of individual equipment filtration from a central location.



Reduced sediment and scale on ice machine evaporator plates decreases maintenance costs. Dual Port Systems reduce chlorine taste and odor; Dual Flow Systems inhibit biofilm growth by allowing chlorinated water to flow to the ice machine.

Both Dual Port and Dual Flow Systems improve the taste, appearance, and consistency of cold beverages.

High Flow Dual Port Sizing

System Model*	Part Number	Number of Cartridges	Flow Rate gal/min (lit/min)
DP190	5624301	1	5 (18.9)
DP290	5624201	2	10 (37.8)
DP390	5624102	3	15 (57.8)

High Flow Dual Flow Sizing

System Model*	Part Number	Number of Beverage Cartridges	Number of Ice Machine Cartridges	Beverage Flow gal/min (lit/min)	Ice Machine Flow gal/min (lit/min)
DF290-CL**	5623601	2	1	2.66 (10.2)	5 (18.9)

* System offers cyst and bacteria¹ reduction with Integrated Membrane Pre-Activated Carbon Technology ("I.M.P.A.C.T.") media

** The carbon in DF290-CL reduces chloramines and chlorine taste and odor

¹ As tested with E. Coli ATCC (11229). Tested and verified by manufacturer's laboratory.

3M™ High Flow Systems for Cold Beverage

Cold beverages are often the most profitable part of convenience stores, restaurants and quick-service operations. For these high-volume cold beverage applications, High Flow HF90 filter delivers enough Recipe Quality Water™ to make more than 432,000 soft drinks (16 oz. soft drinks in 22 oz. cups) with a single cartridge. High Flow cartridge filters include options that deliver the improved performance of Integrated Membrane Pre-Activated Carbon Technology (“I.M.P.A.C.T.”) media*.

A single cartridge High Flow system using the HF90 filter replaces three- or four-cartridge manifolds, lowering capital and operating costs.

For Beverage Water, High Flow Filtration Provides:

- Reduced sediment and chlorine taste and odor for cold beverage quality, consistency, and customer satisfaction.
- Reduced sediment and abrasive hard particles to help extend the life of pumps, valves, o-rings, and seals.
- Reduced numbers of microorganisms, including Cryptosporidium and Giardia cysts¹ and water-borne bacteria² such as E. Coli. (for models featuring Integrated Membrane Pre-Activated Carbon Technology (“I.M.P.A.C.T.”)).
- Virtually no need for an additional pre-filter with 3M™ High Flow Systems (for models featuring Integrated Membrane Pre-Activated Carbon Technology (“I.M.P.A.C.T.”)).



Sizing

System Model Number	Part Number	Micron	Flow Rates		Carbonator Dispensers	Capacity		Replacement Cartridge
			gal/min	lit/min		Gallons	Liters	
BEV130	5616101	0.5	1.67	6.3	Single	14,000	53,000	HF30 5615105
BEV135	5616102	1.0	1.67	6.3	Single	12,600	48,000	HF35 5615205
BEV140	5616201	0.2	2.1	7.9	Single High Flow	25,000	95,000	HF40 5613303
BEV145	5616202	3.0	2.1	7.9	Single High Flow	25,000	95,000	HF45 5613307
BEV160	5616301	0.2	3.34	12.6	Double/Two	35,000	132,000	HF60 5613403
BEV165	5616302	3.0	3.34	12.6	Double/Two	35,000	132,000	HF65 5613407
BEV190	5616401	0.2	5.0	18.9	Up to 5 gal/min	54,000	204,000	HF90 5613503
BEV195	5616402	3.0	5.0	18.9	Up to 5 gal/min	54,000	204,000	HF95 5613507



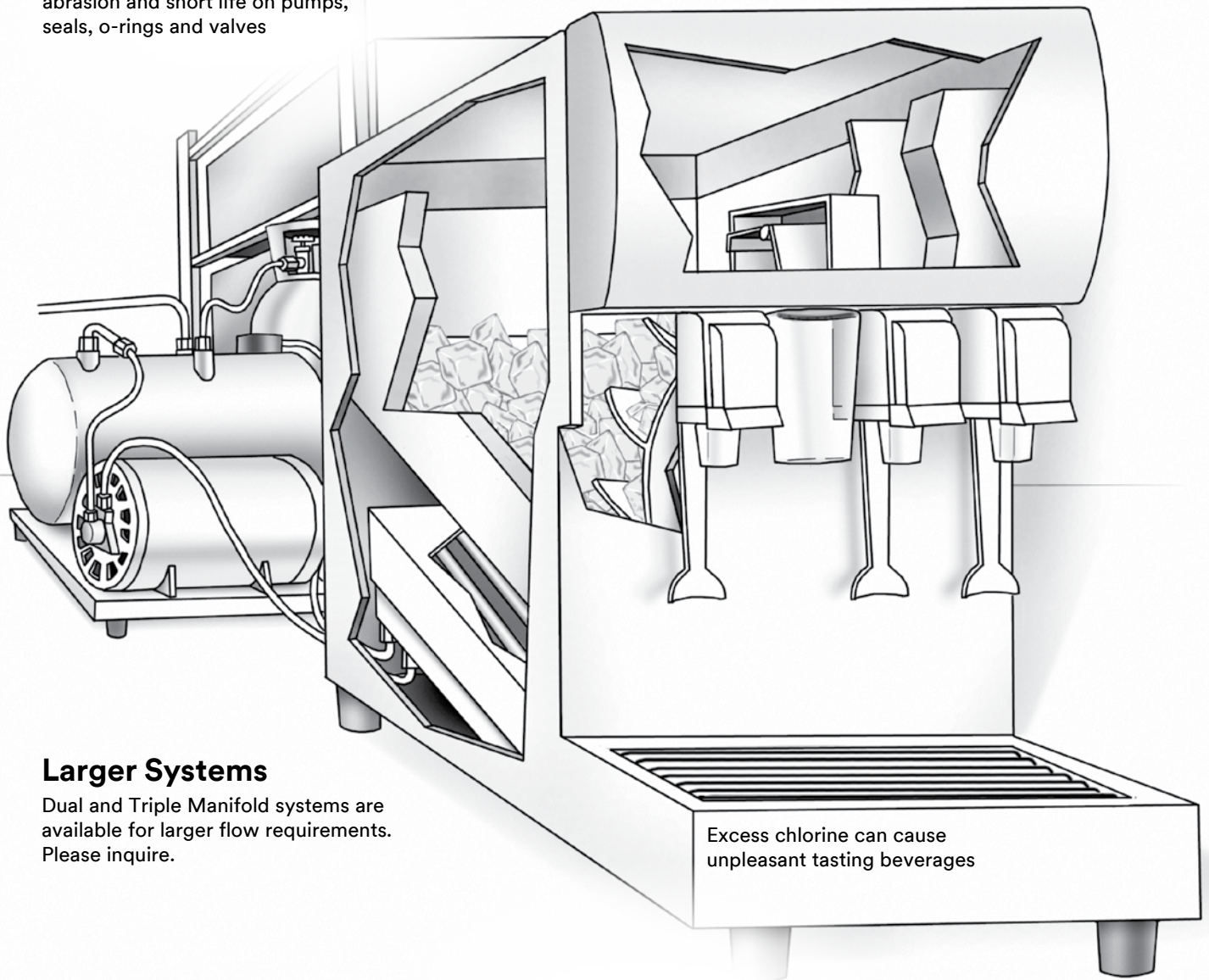
* Filters featuring the Integrated Membrane Pre-Activated Carbon Technology (“I.M.P.A.C.T.”) media can clearly be identified by the (“I.M.P.A.C.T.”) icon on the product label.

¹ NSF Standard 53

² As tested with E. Coli ATCC (11229). Tested and verified by manufacturer’s laboratory.

Excess sediment can cause abrasion and short life on pumps, seals, o-rings and valves

High total dissolved solids (TDS) can cause cloudy and unappealing beverages



Larger Systems

Dual and Triple Manifold systems are available for larger flow requirements. Please inquire.

Excess chlorine can cause unpleasant tasting beverages

All systems deliver reduction of sediment and chlorine taste & odor.

BEV130/135 contain carbon-block media only.

BEV140, BEV160, BEV190 systems include **I**ntegrated **M**embrane **P**re-**A**ctivated **C**arbon **T**echnology (“I.M.P.A.C.T.”) media for cyst and bacteria² reduction.

For high turbidity waters, the media in BEV135, BEV145, BEV165 and BEV195 systems are specially designed to provide cartridge and system life, but not cyst or bacteria reduction.

² As tested with E. Coli ATCC (11229). Tested and verified by manufacturer’s laboratory.

3M™ High Flow Systems for Ice Machines

The ice machine is the backbone of the foodservice industry. Whether it's serving drinks or keeping food fresh, large amounts of ice are key to quality service. If you're looking for cleaner, clearer, consistently, great tasting ice — with reduced *Cryptosporidium* and *Giardia* cysts¹ and water-borne bacteria² such as *E. Coli* — look no further than 3M™ High Flow Series Systems.

High Flow Filters for Ice Offer:

- Reduced sediment and chlorine taste and odor for cleaner ice taste, clarity, consistency and customer satisfaction.
- Reduced chlorine taste and odor helps prevent the effects of chlorine corrosion of metal surfaces.
- Reduced sediment and abrasive hard particles help extend the life of pumps, valves, o-rings and seals.
- Reduced downtime and service calls with the built-in delivery of a scale inhibitor to reduce the ability of calcium and magnesium to precipitate on the evaporator plates as hard scale.
- Integrated **M**embrane **P**re-**A**ctivated **C**arbon **T**echnology ("I.M.P.A.C.T.")* media packages in Models ICE140-S, ICE160-S and ICE190-S result in the reduction of microorganisms, including *Cryptosporidium* and *Giardia* cysts¹ and water-borne bacteria² such as *E. Coli*. Membrane-cartridge challenge testing with *P.fluorescence* and *E. Coli* demonstrated over 99.99% reductions of both organisms.
- Virtually no need for an additional pre-filter with 3M™ High Flow Systems (for models featuring Integrated **M**embrane **P**re-**A**ctivated **C**arbon **T**echnology ("I.M.P.A.C.T.")).



ICE190-S

Sizing

System Model Number	Part Number	Micron	Flow Rates		High Flow Cubers Pounds (Kg) To	Low Flow Cubers Pounds (Kg) To	Flakers Pounds (Kg) To	Capacity		Replacement Cartridge
			gal/min	lit/min				Gallons	Liters	
ICE120-S	5616003	0.5	1.5	5.7	200 (91)	750 (340)	1,200 (544)	9,000	34,000	HF20-S 5615103
ICE125-S	5616004	1.0	1.5	5.7	200 (91)	750 (340)	1,200 (544)	10,000	38,000	HF25-S 5615203
ICE140-S	5616203	0.2	2.1	7.9	600 (272)	1,000 (454)	1,800 (817)	25,000	95,000	HF40-S 5613305
ICE145-S	5616204	3.0	2.1	7.9	600 (272)	1,000 (454)	1,800 (817)	25,000	95,000	HF45-S 5613309
ICE160-S	5616303	0.2	3.34	12.6	1,000 (454)	1,450 (658)	2,400 (1,089)	35,000	132,000	HF60-S 5613405
ICE165-S	5616304	3.0	3.34	12.6	1,000 (454)	1,450 (658)	2,400 (1,089)	35,000	132,000	HF65-S 5613409
ICE190-S	5616403	0.2	5.0	18.9	>1,000 (454)	>1,450 (658)	>2,400 (1,089)	54,000	204,000	HF90-S 5613505
ICE195-S	5616404	3.0	5.0	18.9	>1,000 (454)	>1,450 (658)	>2,400 (1,089)	54,000	204,000	HF95-S 5613509
ICE260-S	5624503	0.2	6.68	25.3	2,400 (1089)	3,000 (1,361)	4,800 (2,177)	70,000	265,000	(2) HF60-S 5613405
ICE265-S	5624504	3.0	6.68	25.3	2,400 (1089)	3,000 (1,361)	4,800 (2,177)	70,000	265,000	(2) HF65-S 5613409

* Filters featuring the Integrated Membrane Pre-Activated Carbon Technology ("I.M.P.A.C.T.") media can clearly be identified by the ("I.M.P.A.C.T.") icon on the product label.

¹ NSF Standard 53

² As tested with *E. Coli* ATCC (11229). Tested and verified by manufacturer's laboratory.

Larger Systems

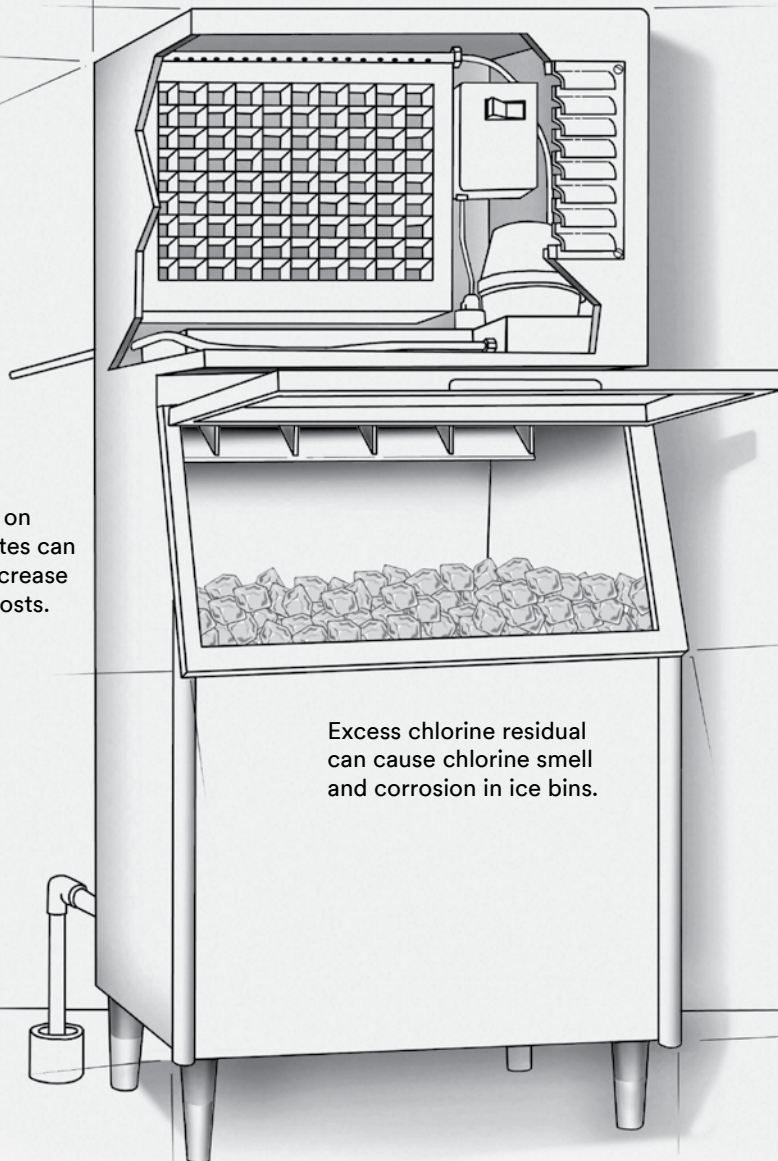
Dual and Triple-Manifold systems are available for larger flow requirements. Please inquire.



ICE260-S

Scale build-up on evaporator plates can significantly increase maintenance costs.

Excess sediment particles can clog distribution tubes and solenoid valves.



Excess chlorine residual can cause chlorine smell and corrosion in ice bins.



All systems deliver reduction of sediment and chlorine taste & odor.

ICE120-S and ICE125-S contain carbon-block media only

ICE140-S, ICE160-S, ICE190-S and ICE260-S systems include **Integrated Membrane Pre-Activated Carbon Technology** ("I.M.P.A.C.T.") media for cyst and bacteria² reduction.

For high turbidity waters, the media in ICE145-S, ICE165-S, ICE195-S and ICE265-S systems are specially designed to provide cartridge and system life, but not cyst or bacteria reduction.

² As tested with E. Coli ATCC (11229). Tested and verified by manufacturer's laboratory. 13

3M™ High Flow Systems for Steamers, Coffee brewers & Ice machines

Scale:

3M™ ScaleGard™ System Model SF165 helps protect steamers, coffee brewers, and ice machines from the effects of scale formation. The SF18-S scale feeder carefully meters the right proportion of high-temperature scale inhibitor into water filtered through an 3M™ High Flow Series cartridge with the option for **I**ntegrated **M**embrane **P**re-**A**ctivated **C**arbon **T**echnology (“I.M.P.A.C.T.”) media. The SF18-S scale feeder may be purchased separately.



SF165

Systems And Sizing — Scale Reduction

Model	Part Number	Capacity		Flow Rate		Sizing
		gal	lit	gpm	lpm	
SF165	5624601	35,000	132,000	3.34	12.6	Coffee Brewers, Ice Machines, and Steamers to Demand flow rates of 3.34 gpm (12.6 lpm)
SF18-S	5607703	35,000	132,000	6	22.7	

3M™ High Flow Systems for Coffee, Tea and Espresso

3M™ High Flow Series filters for hot beverage applications reduce excess chlorine taste and odor and particulate that cause bitter tasting coffee, espresso or tea and clog spray heads. If not filtered these contaminants can wreak havoc on your equipment and lead to expensive replacement costs.

When scale build-up is an issue, 3M™ High Flow BREW Systems add scale inhibitors to help prevent the precipitation of calcium and magnesium that can significantly decrease efficiency and increase maintenance costs.

3M™ High Flow ESP and 3M™ ScaleGard™ Pro (SGP) systems reduce calcium and magnesium ions by ion exchange for crystal clear iced tea and for perfect bean extraction for espresso and espresso-based beverages.

Turn to 3M for excellent flavor, consistency and customer satisfaction.

Systems For Coffee, Tea And Espresso:

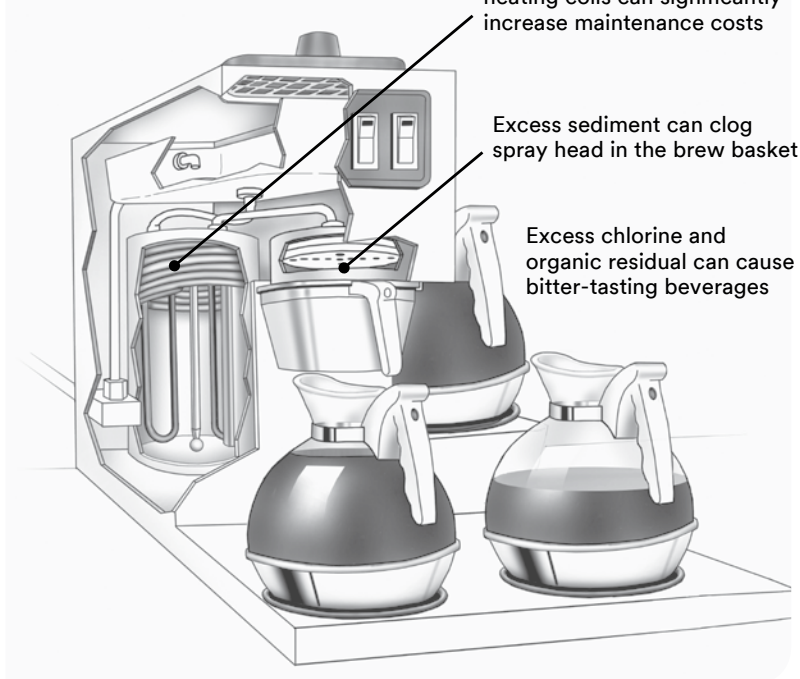
- 3M™ High Flow BREW systems add scale inhibitors for improved scale reduction.
- 3M™ High Flow ESP and 3M™ ScaleGard™ Pro (SGP) systems soften water for espresso without the need for a drain, electrical connections, or salt regeneration.
- Incorporate a valve-in-head design and Sanitary Quick Change cartridge convenience for fast and easy cartridge change-outs. Inlet water is turned off automatically when the cartridge is replaced.

Periodic acid de-liming is recommended for steamer applications

Systems And Sizing — Softening Cartridge Systems For Espresso

Resin Type	Model	Part Number	Flow Rate		Capacity ³
			gpm	lpm	
SAC ¹	ESP124-T	5617610	0.5	1.9	1,100 grains
WAC ²	SGP124BN-T	5617603	0.5	1.9	422.6 gal (1600 liter) @ 10.5 gpg hardness
WAC	SGP165BN-T	5617601	1.0	3.8	719 gal (2722 liter) @ 9.0 gpg hardness
WAC	SGP195BN-T	5617602	1.0	3.8	1200 gal (4542 liter) @ 9.0 gpg hardness

Inlet/outlet fittings are 3/8-inch FNPT



Systems And Sizing — Coffee And Tea¹

System Model Number	Part Number	Micron	Flow Rates		Capacity		Number of 1/2 Gal (2 liter) Pots	Number of 12 oz. (356 ml) Cups of Tea	Replacement Cartridge
			gal/min	lit/min	Gallons	Liters			
BREW105-MS	6213801	1.0	0.75	2.8	1,500	5,700	3,000	16,000	HF05-MS 5609327
BREW110-MS	6213803	0.5	1.0	3.8	3,500	13,200	7,000	37,000	HF10-MS 5609329
BREW115-MS	6213807	5.0	5.0	18.9	3,500	13,200	7,000	37,000	HF15-MS 5609331
BREW120-MS	5616001	0.5	1.5	5.7	9,000	34,000	18,000	96,000	HF20-MS 5615109
BREW125-MS	5616002	1.0	1.5	5.7	10,000	38,000	20,000	107,000	HF25-MS 5615209
BREW130-MS	5616103	0.5	1.67	6.3	14,000	53,000	28,000	150,000	HF30-MS 5615111
BREW135-MS	5616104	1.0	1.67	6.3	12,600	48,000	25,200	134,000	HF35-MS 5615211

¹ Strong acid cation (SAC) resin using in the ion-exchange cartridges reduces calcium and magnesium ions from the incoming water, helping improve the taste of the beverage and reduce scale buildup in the equipment.

² Weak acid cation (WAC) resin using in the ion-exchange cartridges reduces calcium and magnesium ions from the incoming water, helping improve the taste of the beverage and reduce scale buildup in the equipment. A 25% blend is built-in.

³ Refer to price book for ESP Series and ScaleGard Pro Sizing guide for different incoming water hardness.

About 3M Purification — A market leading filtration company

3M Purification is a leader in the design, manufacture, and marketing of a comprehensive line of filtration products for the separation, clarification, and purification of fluids and gasses. Its proprietary products are used in drinking water, healthcare, and industrial markets.

About 3M — A global, diversified technology company

At 3M, we believe the right science applied the right way touches people worldwide. Every day, we're generating breakthroughs that make your lives better, easier and more complete. That's not to say it's easy. Since 1902, the formula for our success has been the same as today: innovation plus perseverance—in our products, our people and our brand.

If our 46 technology platforms—ranging from adhesives and abrasives, to ceramics and nanotechnology—represent our body of work, our research and development team is our heartbeat. And our success would not be complete without our designers, who translate insights into creative solutions around the world.

Product Selection and Use: Many factors beyond 3M's control and uniquely within user's knowledge and control can affect the use and performance of a 3M product in a particular application. As a result, customer is solely responsible for evaluating the product and determining whether it is appropriate and suitable for customer's application, including conducting a workplace hazard assessment and reviewing all applicable regulations and standards (e.g., OSHA, ANSI, etc.). Failure to properly evaluate, select, and use a 3M product and appropriate safety products, or to meet all applicable safety regulations, may result in injury, sickness, death, and/or harm to property.

Warranty, Limited Remedy, and Disclaimer: Unless a different warranty is specifically stated on the applicable 3M product packaging or product literature (in which case such warranty governs), 3M warrants that each 3M product meets the applicable 3M product specification at the time 3M ships the product. 3M MAKES NO OTHER WARRANTIES OR CONDITIONS, EXPRESS OR IMPLIED, INCLUDING, BUT NOT LIMITED TO, ANY IMPLIED WARRANTY OR CONDITION OF MERCHANTABILITY, FITNESS FOR A PARTICULAR PURPOSE, OR ARISING OUT OF A COURSE OF DEALING, CUSTOM, OR USAGE OF TRADE. If a 3M product does not conform to this warranty, then the sole and exclusive remedy is, at 3M's option, replacement of the 3M product or refund of the purchase price.

Limitation of Liability: Except for the limited remedy stated above, and except to the extent prohibited by law, 3M will not be liable for any loss or damage arising from or related to the 3M product, whether direct, indirect, special, incidental, or consequential (including, but not limited to, lost profits or business opportunity), regardless of the legal or equitable theory asserted, including, but not limited to, warranty, contract, negligence, or strict liability.



3M Purification Inc.
400 Research Parkway
Meriden, CT 06450, U.S.A.
Tel (800) 222-7880
(203) 237-5541
Fax (203) 238-8701
www.3Mfoodservice.com
www.3Mpurification.com

3M, ScaleGard and Recipe Quality Water are trademarks of 3M Company.

NSF is a trademark of NSF International.
© 2018 3M Company. All rights reserved.
Please recycle. Printed in U.S.A.
70020194349 REV 0118



Visit www.nsf.org for claims associated with products that are NSF listed.